



FW 2021
COLLECTION



**SUPERIOR ENGINEERED
SLIP & SKID
RESISTANT OUTSOLE**



BETH B.
United States

WONDERFUL SHOES!

They are EXTREMELY comfortable!
Slipped my foot in to try them on and
could not part with them. The leather is nice for
work, and I can walk around all day without pain.
Runs true to size.

5.0 ★★★★★

COMFORT AND SAFETY FOR THE WORK PLACE AND BEYOND

Comfort & Safety for the Workplace fashionable styles for men & women Oil
& Skid Resistant Anti-fungal, Antibacterial & Removable insole.

MANILA-GLATIC®

942509 | 99.95 | 5.5-10, 11 M
Open Stock | Patent Leather



BMP-BLACK MULTI PATENT

MANILA-LEOFLO®

942509 | 99.95 | 5.5-10, 11 M
Open Stock | Patent Leather



RBWP-RAINBOW PATENT

MANILA-FLPWR®

937509 | 89.95 | 5.5-10, 11, 12 M, W
Open Stock | Leather



BM-BLACK MULTI

MANILA-BOREAL®

939509 | 99.95 | 5.5-10, 11, 12 M
Open Stock | Leather



BLUM-BLUE MULTI

MANILA-FREFLO®

939509 | 99.95 | 5.5-10, 11 M
Open Stock | Leather



BM-BLACK MULTI

**MANILA** 935009 | 89.95 | 5.5-10, 11, 12 M, W
Open Stock | Leather

B-BLACK

W-WHITE

MANILA-HYBD 937509 | 89.95 | 5.5-10, 11 M, W | Open Stock
Leather

BLU-BLUE

B-BLACK

MANILA-VANGOGH 939509 | 99.95 | 5.5-10, 11 M
Open Stock | Leather

B-BLACK

**FERRARA-FOG** 932509 | 79.95 | 5.5-10, 11 M
Open Stock

NP-NAVY PATENT

BP-BLACK
PATENT**FERRARA-AVTR** 932509 | 79.95 | 5.5-10, 11 M
Open Stock

BLUM-BLUE MULTI

FERRARA-RACER 932509 | 79.95 | 5.5-10, 11 M
Open Stock

BLUP-BLUE PYTHON PATENT

FERRARA-FIGHTER 932509 | 79.95 | 5.5-10, 11 M
Open Stock

BM-BLACK MULTI



GRIPPING
POWER

SLIP & SKID RESISTANT
TECHNOLOGY AT ITS BEST!
ALL DAY COMFORT, EVERY
DAY. STAY GROUNDED WHILE
LOOKING AND FEELING GREAT.



WINFREY-FLUTTER

929509 | 69.95 | 5.5-10, 11 M, W
Open Stock



BM-BLACK MULTI

WOOLIN-LIGHT

929509 | 69.95 | 5.5-10, 11 M
Open Stock | Microfiber



BLUM-BLUE MULTI



BM-BLACK MULTI

WOOLIN-SWIRL

935009 | 89.95 | 5.5-10, 11 M
Open Stock | Leather



RBW-RAINBOW

WISTERIA

932509 | 79.95 | 5.5-10, 11 M, W
Open Stock | Leather



W-WHITE



B-BLACK

WOOLIN

935009 | 89.95 | 5.5-10, 11 M, W
Open Stock | Leather



B-BLACK



W-WHITE

SELLE

932509 | 79.95 | 5.5-10, 11, 12 M, W
Open Stock | Leather



W-WHITE



B-BLACK

SELLE-TIGRE

932509 | 79.95 | 5.5-10, 11 M
Open Stock | Leather



RBW-RAINBOW

SELLE-ICEBERG

932509 | 79.95 | 5.5-10, 11 M
Open Stock | Leather



RDM-RED MULTI



BM-BLACK
MULTI



**BLAINE** ®935009 | 89.95 | 40-47
Open Stock | Leather**BECKHAM** ®935009 | 89.95 | 40-47
Open Stock | Leather**BERMAN** ®935009 | 89.95 | 40-47
Open Stock | Leather

TRIPLE DENSITY, ANTIFUNGAL,
ANTIBACTERIAL REMOVABLE INSOLE,
WITH A SECOND LAYER BENEATH.

POWER-MAZE ®949509 | 119.95 | 7-10.5, 11, 12, 13
Open Stock | Leather**POWER-SKULL** ®949509 | 119.95 | 7-10.5, 11, 12, 13
Open Stock | Leather**POWER-BLADES** ®942509 | 99.95 | 7-10.5, 11, 12, 13
Open Stock | Leather**POWER-KNIVES** ®942509 | 99.95 | 7-10.5, 11, 12, 13
Open Stock | Leather

SUPERIOR OUTSOLE
ENGINEERING, WITH A TREAD
PATTERN DESIGNED TO
MINIMIZE SLIPPING.

POINT OF PURCHASE PROGRAM



POP Material consists of slat wall shelves and signs, logo blocks, counter cards and other items currently available in our inventory. Please place your order according to your store and assortment needs which will be used against available co-op advertising dollars.

SPRING STEP PROFESSIONAL



A-369 | 95009
5" x 7"
Double Sided
Counter Card



A-384 | 911009
2 Counter Card Set
5" x 7" & 8.5" x 11"
Double Sided



A-394 | 96009
8.5" x 11"
Double Sided
Counter Card

Graphic
Holder Base
without Graphic



A-324 | 910009
2.75" x 2.18" x 2.18"
2Pc Set
Graphic Holder Base



A-408 | 9150009
4 Shoe Table Top Display



A-257 | 910009
Acrylic Logo Block (Blue)

SLAT WALL SYSTEM



- 1

A-344 | 927009
14" x 11"
Acrylic
Pre-Drilled
Branded Sign
- 2

A-330 | 920009
25" x 18" Slat
White Wall
Mounted
Display Panel
- 3

A-374 | 95009
11" x 8.5"
Magnet Graphic



A-364 | 925009
10" x 3.9" 5 Pc Set
Shoe Shelf



A-354 | 925009
14" x 11"
Optional Acrylic
Branded Sign with L
Bracket

KEY SYMBOLS

- NEW

NEW STYLE/COLLECTION
- SKID RESISTANT

OIL RESISTANT

STRETCH

WATER RESISTANT

VEGAN FRIENDLY

HOOK & LOOP
- REMOVABLE INSOLE

NEW COLORS

KEY ITEM/BEST SELLERS

MEMORY FOAM

RELIEF SHOCK ABSORBING TECHNOLOGY

WATERPROOF

ZIPPER

Log into "My Account" www.springfootwear.com and go to the Resource Page. There you will find a wide variety of marketing materials for your use. Gain easy access to:

- >> High Resolution Product Images
- >> Lifestyle Graphics
- >> Product Videos
- >> Brand Logos
- >> Daily Inventory File
- >> P.O.S. Programs and much more.

Save Time and Money with

E-SERVICE

- Place & View Orders • View Invoices
- Trace Shipments • Real Time Stock Inquiries
- View Promotions • View Account History

Place your orders online through e-service at www.springfootwear.com and we will waive the \$3.00 service charge for orders less than six pairs. If you have not registered for E-Service, call your Spring Footwear Customer Service Representative at 800-962-0030.

Customer Service & Support
Mon-Fri: 9am-6pm EST
Phone: 800-962-0030 • Fax: 800-380-4516
mail@springfootwear.com
www.springfootwear.com

WOMEN'S SIZE CONVERSION CHART

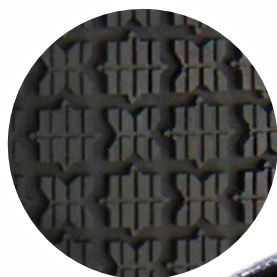
| | | WOMEN'S SIZE CONVERSION CHART | | | | | | | | | |
|----|----|-------------------------------|------|------|------|----|----|-------|--------|--------|--------|
| | | | | | | | | | | | |
| EU | US | 35 | 36 | 37 | 38 | 39 | 40 | 41 | 42 | 43 | 44 |
| | | 5 | 5½-6 | 6½-7 | 7½-8 | 8½ | 9 | 9½-10 | 10½-11 | 11½-12 | 12½-13 |

MEN'S SIZE CONVERSION CHART

| EU | 38 | 39 | 40 | 41 | 42 | 43 | 44 | 45 | 46 | 47 | 48 |
|----|------|------|------|------|----|-------|--------|-----|--------|----|--------|
| US | 5-5½ | 6-6½ | 7-7½ | 8-8½ | 9 | 9½-10 | 10½-11 | 11½ | 12-12½ | 13 | 13½-14 |

BRINGING
VIBRANT COLORS TO
DURABLE LEATHER

"WALKING ON A
CLOUD" COMFORT



SUPERIOR OUTSOLE
ENGINEERING, WITH A
TRED PATTERN DESIGNED
TO MINIMIZE SLIPPING

SELECT STYLES
AVAILABLE IN MEDIUM
AND WIDE WIDTHS




SPRING FOOTWEAR corp.
House of European Comfort

1001 West McNab Road • Pompano Beach, FL 33069
Tel: 954.785.9100 | Toll Free: 800.962.0030
Fax: 954.785.4100 | Toll Free Fax: 800.380.4516
email: info@springfootwear.com | web: www.springfootwear.com

FOLLOW US:



[instagram.com/SpringFootwear](https://www.instagram.com/SpringFootwear) [facebook.com/SpringFootwear](https://www.facebook.com/SpringFootwear) [youtube.com/SpringFootwear](https://www.youtube.com/SpringFootwear)

